

YOUR INDUSTRY PARTNER:

Accurate site measurement for efficient planning

Fast, affordable as-built packages
with 3D virtual walkthroughs

 **iGUIDE®**

Trust iGUIDE for error-free site measurement and documentation

Imagine a world where every commercial design project runs smoothly without costly delays or inaccuracies. Introducing iGUIDE Advanced Drawing Packages for commercial design, the solution that streamlines your process and delivers immersive 3D virtual walkthroughs and high-quality 2D and 3D drawing packages in record time.

iGUIDE specializes in scalable site measurement, modeling and documentation solutions that work seamlessly from the design phase through construction, marketing and sale of the property. No matter the scope, we've got you covered every step of the way.

Streamline your next project

We've simplified our approach to provide you with comprehensive solutions delivered in industry leading timelines. It means less time tracking missed details, and more time dedicated to what matters.



Consultation

Your iGUIDE Project Manager will connect with you and your team to map out your project details, timeline and scope to create a project plan with pricing.



Capture & Processing

A service provider will capture images of your site, then share the data with our professional drafting team to create your drawing package deliverables.



Planning & Design

With our iGUIDE Portal, you have full control of how your files are managed. You can easily access, share or download your files based on your project needs.

Why use iGUIDE?



Precise CAD floor plans & models

Capturing thousands of measurements per scan, each CAD floor plan and 3D model is accurate and available in various formats.



Property detail

Provides room measurements, dimensions and total square footage for space planning purposes, including renovation and fit-out projects.



3D immersive walkthrough

Virtually walk through a real-world space to view conditions and easily locate critical assets including MEP.



Measurement tool

Take custom measurements anytime and anywhere with the virtual walkthrough iGUIDE Viewer.



Real-time tagging

Identify equipment, features, and deficiencies as well as links, files or images.



Photos

Option to include still photos for additional documentation.

The iGUIDE Advantage

We know your plans need to be precise and you should be able to trust your partner.



Dedicated support

A dedicated iGUIDE Project Manager will work closely with you to understand your goals, timeline and scope.



Enhanced visualization

Use iGUIDE's comprehensive 3D virtual walkthroughs to communicate with your partners and vendors virtually.



Cost-effective solution

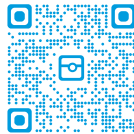
iGUIDE offers competitive pricing, making high-precision as-built packages accessible for all commercial businesses.

Packages

iGUIDE RADIX

iGUIDE RADIX provides fast and efficient site visual documentation. The online interface with lidar point cloud is shareable and can be used to view a site and measure in 3D space.

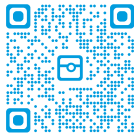
Estimated delivery: 24 hours
[Click here](#) or scan to view sample



iGUIDE Premium

Provide an immersive virtual experience that lets partners, clients and contractors explore your site 24/7 from any location. iGUIDE Premium virtual walkthroughs and floor plans capture every detail and feature unique tagging and measurement tools to help you capture comprehensive project information.

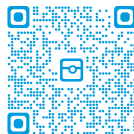
Estimated delivery: 48 hours
[Click here](#) or scan to view sample



iGUIDE 2D CAD

Get the complete picture. This bundle combines iGUIDE's immersive tours with editable CAD floor plans (DWG files) and detailed plotted PDFs for comprehensive property documentation and a jumpstart on your design process.

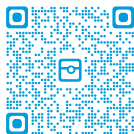
Estimated delivery: 48 hours
[Click here](#) or scan to view sample



iGUIDE 3D CAD

Unlock a property's full potential. This package pairs iGUIDE's immersive experience with 2D CAD (DWG) and 3D model (Revit) deliverables, detailed Plotted PDFs, plus roof plan and exterior elevations to provide comprehensive documentation of your property.

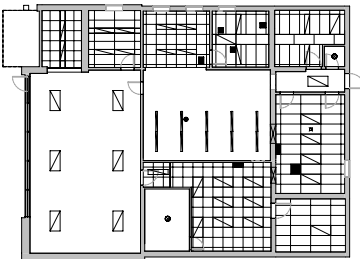
Estimated delivery: 3-4 days
[Click here](#) or scan to view sample



Enhance your plans with our suite of add-ons:

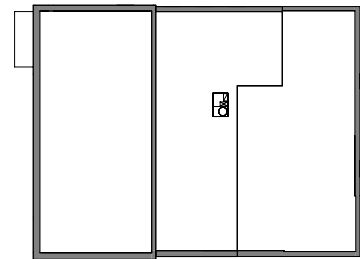
Reflected Ceiling Plan

Available with both packages



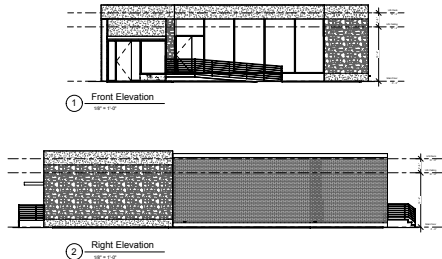
Roof Plan

Available with 3D CAD Package

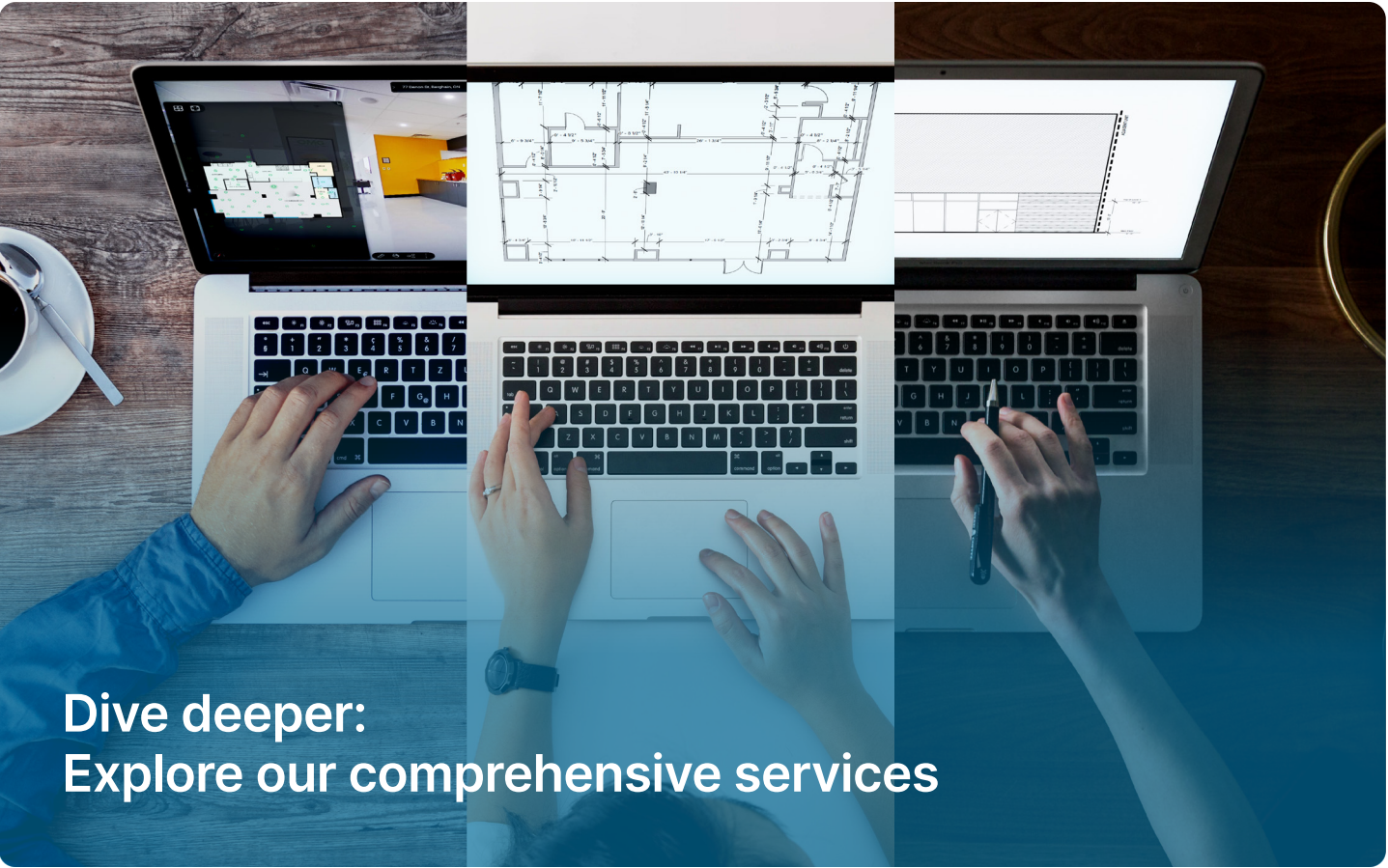


Elevation Drawings

Available with 3D CAD Package



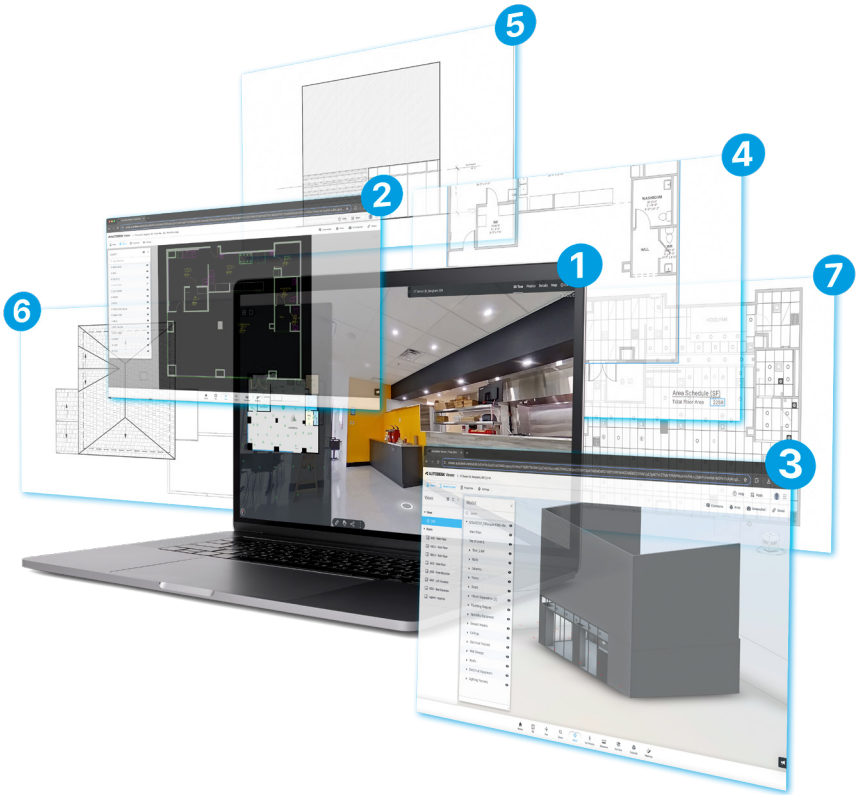
¹Delivery time is dependent on property size and complexity and may exceed 48 hours. Excluding Sundays, holidays, and outside office hours (Mon – Fri, 9am – 5pm EST).



We offer solutions tailored to your specific project needs, with scalable options that fit right from the design phase to the as-built process up to the market and sale of the property!

As-built packages may include:

- 1. 3D Tour
- 2. DWG file
- 3. RVT file
- 4. Plotted PDF
- 5. Elevation Drawing (w/ 3D CAD)
- 6. Roof Plan (w/ 3D CAD)
- 7. Reflected Ceiling Plan (Add-on)



About us

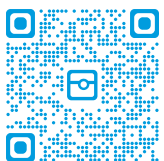
Founded in 2013, in Kitchener, Ontario, Canada, Planitar Inc. is the maker of iGUIDE, a proprietary camera and software platform for capturing and delivering immersive 3D virtual walkthroughs and extensive property data.

Why iGUIDE

iGUIDE is the most efficient system to map interior spaces and features accurate floor plans, measurements and reliable property square footage. By integrating floor plans and visual data, iGUIDE provides an intuitive and practical way to digitally navigate and explore built environments.



Contact us



✉ sales@planitar.com

☎ 1 844 568 1723

🖱 goiguide.com/commercial-design

📍 560 Parkside Drive,
Unit 401, Waterloo, ON,
Canada N2L 5Z4