

Maximize efficiency with our DWG Floor Plans



Save time and resources with DWG floor plans **delivered in hours not days.**

We offer a fast and cost-effective solution for capturing your project measurements to generate accurate DWG and 2D floor plans with an immersive 3D virtual walkthrough.

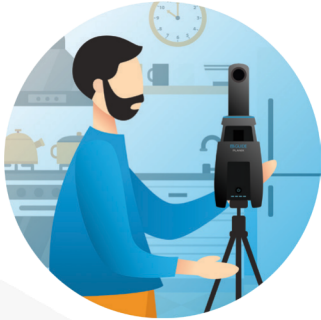
Our DWG Floor Plans include:

- ✓ Various window types
 - Casement
 - Double hung
 - Hopper or Awning
 - Jalousie
 - Fixed
 - Sliding
- ✓ Interior wall thicknesses set to North American standards*
- ✓ Exterior spaces included (patios, decks, porches, etc.)
- ✓ Vertical floor-to-floor alignment
- ✓ A LOD (level of development) of 200
- ✓ AIA (American Institute of Architects) standard layers
- ✓ Annotations include labels, area totals, objects, dimensions, etc.

*Dimensional lumber increments.

Say goodbye to hours of manual measurements and drawing

Our services allow for quicker permit approval, remote 24/7/365 project site review via a 3D virtual walkthrough, digital measurements and remote bid securing from partners.



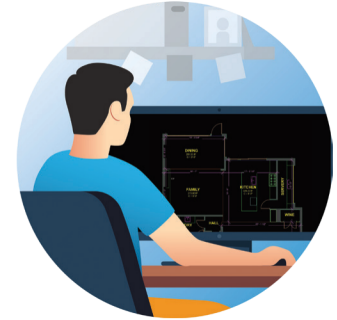
Capture

We capture the property data.



Process

Advanced AI and professional drafters process the data, creating a schematic floor plan, 3D walkthrough and DWG file.



Utilize

Leverage the output to decrease project time, increase productivity and reduce operating costs.

With iGUIDE DWG Floor Plans, you can expect:



Improved accuracy and better intersections over other formats.



A faster rate of capture: Measure properties in minutes, not hours.



Enhanced speed of delivery: Less than 48 hours instead of 5-10 days.¹



Less than half the cost of traditional methods.

¹RVT model delivery time is dependent on property size & complexity which may exceed 72 hours. Excluding Saturdays & Sundays, holidays and outside office hours (Mon - Fri, 9AM - 5pm EST).

Let's get started!

